

RF Switch (0.2 to 120W)

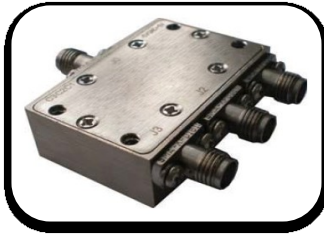
0.3-18GHz Standard Specifications

SPST / SPDT / SP3T / / SP24T

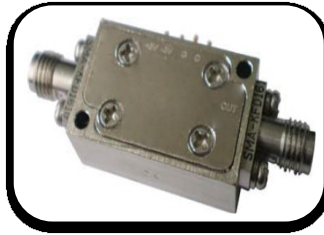
ID CONNECTING



SP3T



SP3T



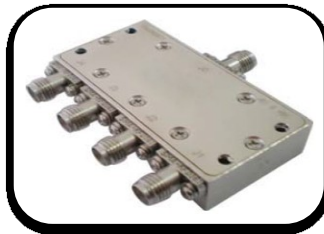
SPDT



SP6T



SP24T



SP4T

RF Switch (0.2W to 120W)

- Freq. Range 0.2-18GHz
- SPST / SPDT / SP3T /.... SP24T
- Operating Temp. : -35 ~ +70 °C
- Storage Temp. -45~+85 °C

RF Switch (High Power 120W)

0.2W RF Switch Absorptive and Reflective

Model	Type	Freq.	Insertion	Isolator	VSWR	Average	RF switching	TTL delay	Power	Power	Work
		Range	Loss			Power	Time	Time	Supply 1	Supply 2	Style
		GHz	dB Max			dB Min	Max	ns Max	ns Max	Type	Type
MSW1-005010R	SPST	0.5-1	1.3	80	1.5	0.2	200ns	30ns	30mA / 5V	30mA / -5V	Reflective
MSW1-005100A	SPST	0.5-1	1.5	80	1.5	0.2	200ns	30ns	30mA / 5V	30mA / -5V	Absorptive
MSW1-010020A	SPST	1-2	1.1	80	1.5	0.2	50ns	30ns	30mA / 5V	30mA / -5V	Absorptive
MSW1-010020R	SPST	1-2	0.8	80	1.5	0.2	50ns	30ns	30mA / 5V	30mA / -5V	Reflective
MSW1-020040A	SPST	2-4	1.6	80	1.5	0.2	50ns	30ns	30mA / 5V	30mA / -5V	Absorptive
MSW1-020040R	SPST	2-4	1.2	80	1.5	0.2	50ns	30ns	30mA / 5V	30mA / -5V	Reflective
MSW1-020180A	SPST	2-18	2.4	60	2.2	0.2	50ns	30ns	30mA / 5V	30mA / -5V	Absorptive
MSW1-020180R	SPST	2-18	2.0	55	2.2	0.2	50ns	30ns	30mA / 5V	30mA / -5V	Reflective
MSW1-040080A	SPST	4-8	1.8	60	1.6	0.2	50ns	30ns	30mA / 5V	30mA / -5V	Absorptive
MSW1-040080R	SPST	4-8	1.5	60	1.6	0.2	50ns	30ns	30mA / 5V	30mA / -5V	Reflective
MSW1-080120A	SPST	8-12	1.8	60	1.6	0.2	50ns	30ns	30mA / 5V	30mA / -5V	Absorptive
MSW1-080120R	SPST	8-12	1.8	60	1.7	0.2	50ns	30ns	30mA / 5V	30mA / -5V	Reflective
MSW1-0A2005A	SPST	0.02-0.5	1.4	80	1.5	0.2	200ns	30ns	30mA / 5V	30mA / -5V	Absorptive
MSW1-0A2005R	SPST	0.02-0.5	1.2	80	1.5	0.2	200ns	30ns	30mA / 5V	30mA / -5V	Reflective
MSW1-0A2030A	SPST	0.02-3	2.4	60	2.0	0.2	200ns	30ns	30mA / 5V	30mA / -5V	Absorptive
MSW1-0A2030R	SPST	0.02-3	2.2	60	2.0	0.2	200ns	30ns	30mA / 5V	30mA / -5V	Reflective
MSW1-120180A	SPST	12-18	2.0	60	1.6	0.2	50ns	30ns	30mA / 5V	30mA / -5V	Absorptive
MSW1-120180R	SPST	12-18	2.0	60	2.0	0.2	50ns	30ns	30mA / 5V	30mA / -5V	Reflective
MSW2-001045R	SPDT	0.1-4.5	2.0	70	2.0	0.2	50ns	30ns	30mA / 5V	30mA / -5V	Reflective

RF Switch (High Power 120W)

0.2W RF Switch Absorptive and Reflective

Model	Type	Freq.	Insertion	Isolator	VSWR	Average	RF switching	TTL delay	Power	Power	Work
		Range	Loss			Power	Time	Time	Supply 1	Supply 2	Style
		GHz	dB Max			dB Min	Max	ns Max	ns Max	Type	Type
MSW2-005010A	SPDT	0.5-1	1.6	80	1.5	0.2	200ns	30ns	30mA / 5V	30mA / -5V	Absorptive
MSW2-005010R	SPDT	0.5-1	1.4	80	1.5	0.2	50ns	30ns	30mA / 5V	30mA / -5V	Reflective
MSW2-010020A	SPDT	1-2	1.2	80	1.5	0.2	50ns	30ns	30mA / 5V	30mA / -5V	Absorptive
MSW2-010020R	SPDT	1-2	1.0	80	1.5	0.2	50ns	30ns	30mA / 5V	30mA / -5V	Reflective
MSW2-020040A	SPDT	2-4	1.8	80	1.5	0.2	50ns	30ns	30mA / 5V	30mA / -5V	Absorptive
MSW2-020040R	SPDT	2-4	1.6	80	1.5	0.2	50ns	30ns	30mA / 5V	30mA / -5V	Reflective
MSW2-020180A	SPDT	2-18	2.6	60	2.2	0.2	50ns	30ns	30mA / 5V	30mA / -5V	Absorptive
MSW2-020180R	SPDT	2-18	2.2	60	2.2	0.2	50ns	30ns	30mA / 5V	30mA / -5V	Reflective
MSW2-040080A	SPDT	4-8	2.0	60	1.6	0.2	50ns	30ns	30mA / 5V	30mA / -5V	Absorptive
MSW2-040080R	SPDT	4-8	1.8	60	1.5	0.2	50ns	30ns	30mA / 5V	30mA / -5V	Reflective
MSW2-080120A	SPDT	8-12	2.4	60	1.5	0.2	50ns	30ns	30mA / 5V	30mA / -5V	Absorptive
MSW2-080120R	SPDT	8-12	2.0	60	1.7	0.2	50ns	30ns	30mA / 5V	30mA / -5V	Reflective
MSW2-0A2005A	SPDT	0.02-0.5	1.5	80	1.52	0.2	200ns	30ns	30mA / 5V	30mA / -5V	Absorptive
MSW2-0A2005R	SPDT	0.02-0.5	1.3	80	1.5	0.2	200ns	30ns	30mA / 5V	30mA / -5V	Reflective
MSW2-0A2030A	SPDT	0.02-3	2.5	60	2.0	0.2	200ns	30ns	30mA / 5V	30mA / -5V	Absorptive
MSW2-0A2030R	SPDT	0.02-3	2.3	60	2.0	0.2	200ns	30ns	30mA / 5V	30mA / -5V	Reflective
MSW2-120180A	SPDT	12-18	2.6	60	2.0	0.2	50ns	30ns	30mA / 5V	30mA / -5V	Absorptive
MSW2-120180R	SPDT	12-18	2.2	60	2.2	0.2	50ns	30ns	30mA / 5V	30mA / -5V	Reflective

RF Switch (High Power 120W)

0.2W RF Switch Absorptive and Reflective

Model	Type	Freq.	Insertion	Isolator	VSWR	Average	RF switching	TTL delay	Power	Power	Work
		Range	Loss			Power	Time	Time	Supply 1	Supply 2	Style
		GHz	dB Max			W Max	ns Max	ns Max	Type	Type	
MSW3-005010A	SP3T	0.5-1	1.6	80	1.5	0.2	200ns	30ns	30mA / 5V	30mA / -5V	Absorptive
MSW3-005010R	SP3T	0.5-1	1.5	80	1.5	0.2	200ns	30ns	30mA / 5V	30mA / -5V	Reflective
MSW3-010020A	SP3T	1-2	1.4	80	1.5	0.2	50ns	30ns	30mA / 5V	30mA / -5V	Absorptive
MSW3-010020R	SP3T	1-2	1.2	80	1.5	0.2	50ns	30ns	30mA / 5V	30mA / -5V	Reflective
MSW3-020040A	SP3T	2-4	1.8	80	1.5	0.2	50ns	30ns	30mA / 5V	30mA / -5V	Absorptive
MSW3-020040R	SP3T	2-4	1.3	80	1.5	0.2	50ns	30ns	30mA / 5V	30mA / -5V	Reflective
MSW3-020180A	SP3T	2-18	2.7	60	2.2	0.2	50ns	30ns	30mA / 5V	30mA / -5V	Absorptive
MSW3-020180R	SP3T	2-18	2.6	60	2.2	0.2	50ns	30ns	30mA / 5V	30mA / -5V	Reflective
MSW3-040080A	SP3T	4-8	2.1	60	1.6	0.2	50ns	30ns	30mA / 5V	30mA / -5V	Absorptive
MSW3-040180R	SP3T	4-8	1.7	60	1.6	0.2	50ns	30ns	30mA / 5V	30mA / -5V	Reflective
MSW3-080120A	SP3T	8-12	2.6	60	1.5	0.2	50ns	30ns	30mA / 5V	30mA / -5V	Absorptive
MSW3-080120R	SP3T	8-12	2.0	60	1.7	0.2	50ns	30ns	30mA / 5V	30mA / -5V	Reflective
MSW3-0A2005A	SP3T	0.02-0.5	1.5	80	1.52	0.2	200ns	30ns	30mA / 5V	30mA / -5V	Absorptive
MSW3-0A2005R	SP3T	0.02-0.5	1.4	80	1.5	0.2	200ns	30ns	30mA / 5V	30mA / -5V	Reflective
MSW3-0A2030A	SP3T	0.02-3	2.6	60	2.0	0.2	200ns	30ns	30mA / 5V	30mA / -5V	Absorptive
MSW3-0A2030R	SP3T	0.02-3	2.4	60	2.0	0.2	200ns	30ns	30mA / 5V	30mA / -5V	Reflective
MSW3-120180A	SP3T	12-18	2.7	60	2.0	0.2	50ns	30ns	30mA / 5V	30mA / -5V	Absorptive
MSW3-120180R	SP3T	12-18	2.6	60	2.0	0.2	50ns	30ns	30mA / 5V	30mA / -5V	Reflective

RF Switch (High Power 120W)

0.2W RF Switch Absorptive and Reflective

Model	Type	Freq.	Insertion	Isolator	VSWR	Average	RF switching	TTL delay	Power	Power	Work Style
		Range	Loss			Power	Time	Time	Supply 1	Supply 2	
		GHz	dB Max			dB Min	W Max	ns Max	ns Max	Type	
MSW4-005010A	SP4T	0.5-1	1.7	80	1.5	0.2	200ns	30ns	30mA / 5V	30mA / -5V	Absorptive
MSW4-005010R	SP4T	0.5-1	1.6	80	1.5	0.2	200ns	30ns	30mA / 5V	30mA / -5V	Reflective
MSW4-010020A	SP4T	1-2	1.4	80	1.5	0.2	50ns	30ns	30mA / 5V	30mA / -5V	Absorptive
MSW4-010020R	SP4T	1-2	1.2	80	1.5	0.2	50ns	30ns	30mA / 5V	30mA / -5V	Reflective
MSW4-020040A	SP4T	2-4	1.8	80	1.5	0.2	50ns	30ns	30mA / 5V	30mA / -5V	Absorptive
MSW4-020040R	SP4T	2-4	1.4	80	1.5	0.2	50ns	30ns	30mA / 5V	30mA / -5V	Reflective
MSW4-020180A	SP4T	2-18	2.8	60	2.2	0.2	50ns	30ns	30mA / 5V	30mA / -5V	Absorptive
MSW4-020180R	SP4T	2-18	2.7	60	2.2	0.2	50ns	30ns	30mA / 5V	30mA / -5V	Reflective
MSW4-040080A	SP4T	4-8	2.2	60	1.6	0.2	50ns	30ns	30mA / 5V	30mA / -5V	Absorptive
MSW4-040080R	SP4T	4-8	1.8	60	1.6	0.2	50ns	30ns	30mA / 5V	30mA / -5V	Reflective
MSW4-080120A	SP4T	8-12	2.7	60	1.5	0.2	50ns	30ns	30mA / 5V	30mA / -5V	Absorptive
MSW4-080120R	SP4T	8-12	2.1	60	1.7	0.2	50ns	30ns	30mA / 5V	30mA / -5V	Reflective
MSW4-0A2005A	SP4T	0.02-0.5	1.6	80	1.5	0.2	200ns	30ns	30mA / 5V	30mA / -5V	Absorptive
MSW4-0A2005R	SP4T	0.02-0.5	1.5	80	1.52	0.2	200ns	30ns	30mA / 5V	30mA / -5V	Reflective
MSW4-0A2030A	SP4T	0.02-3	2.7	60	2.0	0.2	200ns	30ns	30mA / 5V	30mA / -5V	Absorptive
MSW4-0A2030R	SP4T	0.02-3	2.5	60	2.0	0.2	200ns	30ns	30mA / 5V	30mA / -5V	Reflective
MSW4-120180A	SP4T	12-18	2.8	60	2.0	0.2	50ns	30ns	30mA / 5V	30mA / -5V	Absorptive
MSW4-120180R	SP4T	12-18	2.7	60	2.0	0.2	50ns	30ns	30mA / 5V	30mA / -5V	Reflective

RF Switch (High Power 120W)

0.2W RF Switch Absorptive and Reflective

Model	Type	Freq.	Insertion	Isolator	VSWR	Average	RF switching	TTL delay	Power	Power	Work
		Range	Loss			Power	Time	Time	Supply 1	Supply 2	Style
		GHz	dB Max	dB Min	W Max	ns Max	ns Max	Type	Type		
MSW5-005010A	SP5T	0.5-1	1.7	80	1.5	0.2	200ns	30ns	30mA / 5V	30mA / -5V	Absorptive
MSW5-005010R	SP5T	0.5-1	1.6	80	1.5	0.2	200ns	30ns	30mA / 5V	30mA / -5V	Reflective
MSW5-010020A	SP5T	1-2	1.5	80	1.5	0.2	50ns	30ns	30mA / 5V	30mA / -5V	Absorptive
MSW5-010020R	SP5T	1-2	1.3	80	1.5	0.2	50ns	30ns	30mA / 5V	30mA / -5V	Reflective
MSW5-020040A	SP5T	2-4	1.9	80	1.5	0.2	50ns	30ns	30mA / 5V	30mA / -5V	Absorptive
MSW5-020040R	SP5T	2-4	1.5	80	1.5	0.2	50ns	30ns	30mA / 5V	30mA / -5V	Reflective
MSW5-020180A	SP5T	2-18	3.0	60	2.2	0.2	50ns	30ns	30mA / 5V	30mA / -5V	Absorptive
MSW5-020180R	SP5T	2-18	2.8	60	2.2	0.2	50ns	30ns	30mA / 5V	30mA / -5V	Reflective
MSW5-02A030A	SP5T	0.02-3	2.8	60	2.0	0.2	200ns	30ns	30mA / 5V	30mA / -5V	Absorptive
MSW5-040080A	SP5T	4-8	2.3	60	1.6	0.2	50ns	30ns	30mA / 5V	30mA / -5V	Absorptive
MSW5-040080R	SP5T	4-8	1.8	60	1.6	0.2	50ns	30ns	30mA / 5V	30mA / -5V	Reflective
MSW5-080120A	SP5T	8-12	2.9	60	1.5	0.2	50ns	30ns	30mA / 5V	30mA / -5V	Absorptive
MSW5-080120R	SP5T	8-12	2.1	60	1.7	0.2	50ns	30ns	30mA / 5V	30mA / -5V	Reflective
MSW5-0A2005A	SP5T	0.02-0.5	1.6	80	1.5	0.2	200ns	30ns	30mA / 5V	30mA / -5V	Absorptive
MSW5-0A2005R	SP5T	0.02-0.5	1.5	80	1.52	0.2	200ns	30ns	30mA / 5V	30mA / -5V	Reflective
MSW5-0A2030R	SP5T	0.02-3	2.6	60	2.0	0.2	200ns	30ns	30mA / 5V	30mA / -5V	Reflective
MSW5-120180A	SP5T	12-18	3.0	60	2.0	0.2	50ns	30ns	30mA / 5V	30mA / -5V	Absorptive
MSW5-120180R	SP5T	12-18	2.9	60	2.0	0.2	50ns	30ns	30mA / 5V	30mA / -5V	Reflective

RF Switch (High Power 120W)

0.2W RF Switch Absorptive and Reflective

Model	Type	Freq.	Insertion	Isolator	VSWR	Average	RF switching	TTL delay	Power	Power	Work
		Range	Loss			Power	Time	Time	Supply 1	Supply 2	Style
		GHz	dB Max	dB Min	Max	W Max	ns Max	ns Max	Type	Type	
MSW6-005010A	SP6T	0.5-1	1.8	80	1.5	0.2	200ns	30ns	30mA / 5V	30mA / -5V	Absorptive
MSW6-005010R	SP6T	0.5-1	1.7	80	1.5	0.2	200ns	30ns	30mA / 5V	30mA / -5V	Reflective
MSW6-010020A	SP6T	1-2	1.6	80	1.5	0.2	50ns	30ns	30mA / 5V	30mA / -5V	Absorptive
MSW6-010020R	SP6T	1-2	1.4	80	1.5	0.2	50ns	30ns	30mA / 5V	30mA / -5V	Reflective
MSW6-020040A	SP6T	2-4	2.0	80	1.5	0.2	50ns	30ns	30mA / 5V	30mA / -5V	Absorptive
MSW6-020040R	SP6T	2-4	1.6	80	1.5	0.2	50ns	30ns	30mA / 5V	30mA / -5V	Reflective
MSW6-020180A	SP6T	2-18	3.2	60	2.2	0.2	50ns	30ns	30mA / 5V	30mA / -5V	Absorptive
MSW6-020180R	SP6T	2-18	3.0	60	2.2	0.2	50ns	30ns	30mA / 5V	30mA / -5V	Reflective
MSW6-040080A	SP6T	4-8	2.4	60	1.7	0.2	50ns	30ns	30mA / 5V	30mA / -5V	Absorptive
MSW6-040080R	SP6T	4-8	2.0	60	1.6	0.2	50ns	30ns	30mA / 5V	30mA / -5V	Reflective
MSW6-040180R	SP6T	4-18	4	40	2.5	0.2	50ns	30ns	+5V	-5V	Reflective
MSW6-080120A	SP6T	8-12	3.0	60	1.5	0.2	50ns	30ns	30mA / 5V	30mA / -5V	Absorptive
MSW6-080120R	SP6T	8-12	2.8	60	1.7	0.2	50ns	30ns	30mA / 5V	30mA / -5V	Reflective
MSW6-0A2005A	SP6T	0.02-0.5	1.7	80	1.5	0.2	200ns	30ns	30mA / 5V	30mA / -5V	Absorptive
MSW6-0A2005R	SP6T	0.02-0.5	1.6	80	1.5	0.2	200ns	30ns	30mA / 5V	30mA / -5V	Reflective
MSW6-0A2030A	SP6T	0.02-3	2.9	60	2.0	0.2	200ns	30ns	30mA / 5V	30mA / -5V	Absorptive
MSW6-0A2030R	SP6T	0.02-3	2.7	60	2.0	0.2	200ns	30ns	30mA / 5V	30mA / -5V	Reflective
MSW6-120180A	SP6T	12-18	3.2	60	2.0	0.2	50ns	30ns	30mA / 5V	30mA / -5V	Absorptive

RF Switch (High Power 120W)

0.2W RF Switch Absorptive and Reflective

Model	Type	Freq.	Insertion	Isolator	VSWR	Average	RF switching	TTL delay	Power	Power	Work
		Range	Loss			Power	Time	Time	Supply 1	Supply 2	Style
		GHz	dB Max	dB Min	Max	W Max	ns Max	ns Max	Type	Type	
MSW6-120180R	SP6T	12-18	3.0	60	2.0	0.2	50ns	30ns	30mA / 5V	30mA / -5V	Reflective
MSW7-005010A	SP7T	0.5-1	1.9	80	1.5	0.2	200ns	30ns	30mA / 5V	30mA / -5V	Absorptive
MSW7-005010R	SP7T	0.5-1	1.8	80	1.5	0.2	200ns	30ns	30mA / 5V	30mA / -5V	Reflective
MSW7-010020A	SP7T	1-2	1.6	80	1.5	0.2	50ns	30ns	30mA / 5V	30mA / -5V	Absorptive
MSW7-010020R	SP7T	1-2	1.4	80	1.5	0.2	50ns	30ns	30mA / 5V	30mA / -5V	Reflective
MSW7-020040A	SP7T	2-4	2.0	80	1.5	0.2	50ns	30ns	30mA / 5V	30mA / -5V	Absorptive
MSW7-020040R	SP7T	2-4	1.6	80	1.5	0.2	50ns	30ns	30mA / 5V	30mA / -5V	Reflective
MSW7-020180A	SP7T	2-18	3.5	60	2.2	0.2	50ns	30ns	30mA / 5V	30mA / -5V	Absorptive
MSW7-020180R	SP7T	2-18	3.3	60	2.2	0.2	50ns	30ns	30mA / 5V	30mA / -5V	Reflective
MSW7-040080A	SP7T	4-8	2.4	60	1.7	0.2	50ns	30ns	30mA / 5V	30mA / -5V	Absorptive
MSW7-040080R	SP7T	4-8	2.0	60	1.6	0.2	50ns	30ns	30mA / 5V	30mA / -5V	Reflective
MSW7-080120A	SP7T	8-12	3.1	60	1.5	0.2	50ns	30ns	30mA / 5V	30mA / -5V	Absorptive
MSW7-080120R	SP7T	8-12	2.5	60	1.7	0.2	50ns	30ns	30mA / 5V	30mA / -5V	Reflective
MSW7-0A2005A	SP7T	0.02-0.5	1.8	80	1.5	0.2	200ns	30ns	30mA / 5V	30mA / -5V	Absorptive
MSW7-0A2005R	SP7T	0.02-0.5	1.7	80	1.5	0.2	200ns	30ns	30mA / 5V	30mA / -5V	Reflective
MSW7-0A2030A	SP7T	0.02-3	3.0	60	2.0	0.2	200ns	30ns	30mA / 5V	30mA / -5V	Absorptive
MSW7-0A2030R	SP7T	0.02-3	2.8	60	2.0	0.2	200ns	30ns	30mA / 5V	30mA / -5V	Reflective
MSW7-120180A	SP7T	12-18	3.5	60	2.0	0.2	50ns	30ns	30mA / 5V	30mA / -5V	Absorptive

RF Switch (High Power 120W)

0.2W RF Switch Absorptive and Reflective

Model	Type	Freq.	Insertion	Isolator	VSWR	Average	RF switching	TTL delay	Power	Power	Work
		Range	Loss			Power	Time	Time	Supply 1	Supply 2	Style
		GHz	dB Max			dB Min	Max	ns Max	ns Max	Type	Type
MSW7-120180R	SP7T	12-18	3.3	60	2.0	0.2	50ns	30ns	30mA / 5V	30mA / -5V	Reflective
MSW8-005010A	SP8T	0.5-1	2.0	80	1.5	0.2	200ns	30ns	30mA / 5V	30mA / -5V	Absorptive
MSW8-005010R	SP8T	0.5-1	1.8	80	1.5	0.2	200ns	30ns	30mA / 5V	30mA / -5V	Reflective
MSW8-010020A	SP8T	1-2	1.7	80	1.5	0.2	50ns	30ns	30mA / 5V	30mA / -5V	Absorptive
MSW8-010020R	SP8T	1-2	1.4	80	1.5	0.2	50ns	30ns	30mA / 5V	30mA / -5V	Reflective
MSW8-020040A	SP8T	2-4	2.0	80	1.5	0.2	50ns	30ns	30mA / 5V	30mA / -5V	Absorptive
MSW8-020040R	SP8T	2-4	1.7	80	1.5	0.2	50ns	30ns	30mA / 5V	30mA / -5V	Reflective
MSW8-020180R	SP8T	2-18	3.5	60	2.2	0.2	50ns	30ns	30mA / 5V	30mA / -5V	Reflective
MSW8-040080A	SP8T	4-8	2.5	60	1.8	0.2	50ns	30ns	30mA / 5V	30mA / -5V	Absorptive
MSW8-040080R	SP8T	4-8	2.2	60	1.6	0.2	50ns	30ns	30mA / 5V	30mA / -5V	Reflective
MSW8-0A2005A	SP8T	0.02-0.5	1.9	80	1.5	0.2	200ns	30ns	30mA / 5V	30mA / -5V	Absorptive
MSW8-0A2005R	SP8T	0.02-0.5	1.7	80	1.5	0.2	200ns	30ns	30mA / 5V	30mA / -5V	Reflective
MSW8-0A2030A	SP8T	0.02-3	3.2	60	2.0	0.2	200ns	30ns	30mA / 5V	30mA / -5V	Absorptive
MSW8-0A2030R	SP8T	0.02-3	3.0	60	2.0	0.2	200ns	30ns	30mA / 5V	30mA / -5V	Reflective

RF Switch (High Power 120W)

120W RF Switch Absorptive and Reflective

Model	Type	Freq.	Insertion	Isolator	VSWR	Average	RF switching	TTL delay	Power	Power
		Range	Loss			Power	Time	Time	Supply 1	Supply 2
		GHz	dB Max			dB Min	Max	W Max	ns Max	ns Max
MSW1-005010H	SPST	0.5-1	0.4	30	1.3	120	900ns	30ns	200mA / 5V	10mA / -48V
MSW1-010020H	SPST	1-2	0.5	30	1.3	120	900ns	30ns	200mA / 5V	10mA / -48V
MSW1-020040H	SPST	2-4	0.6	26	1.4	120	900ns	30ns	200mA / 5V	10mA / -48V
MSW1-040080H	SPST	4-8	0.8	20	1.7	120	900ns	30ns	200mA / 5V	10mA / -48V
MSW1-060180H	SPST	6-18	1.4	20	1.7	120	900ns	30ns	200mA / 5V	10mA / -48V
MSW2-001005H	SPDT	0.1-0.5	0.8	30	1.5	120	900ns	30ns	200mA / 5V	50mA / +24V
MSW2-002004H	SPDT	0.2-0.4	1.0	30	1.5	50	10us	30ns	200mA / 5V	10mA / -48V
MSW2-005010H	SPDT	0.5-1	0.7	30	1.3	120	900ns	30ns	200mA / 5V	10mA / -48V
MSW2-010020H	SPDT	1-2	0.7	30	1.4	120	900ns	30ns	200mA / 5V	10mA / -48V
MSW2-020040H	SPDT	2-4	0.6	30	1.4	120	900ns	30ns	200mA / 5V	10mA / -48V
MSW2-020040H	SPDT	2-4	0.6	30	1.5	120	900ns	30ns	200mA / 5V	10mA / -48V
MSW2-035040H	SPDT	3.5-4	1	26	1.5	120	900ns	30ns	200mA / 5V	10mA / -48V
MSW1-005010H	SPST	0.5-1	0.4	30	1.3	120	900ns	30ns	200mA / 5V	10mA / -48V
MSW1-010020H	SPST	1-2	0.5	30	1.3	120	900ns	30ns	200mA / 5V	10mA / -48V
MSW1-020040H	SPST	2-4	0.6	26	1.4	120	900ns	30ns	200mA / 5V	10mA / -48V
MSW1-040080H	SPST	4-8	0.8	20	1.7	120	900ns	30ns	200mA / 5V	10mA / -48V
MSW1-060180H	SPST	6-18	1.4	20	1.7	120	900ns	30ns	200mA / 5V	10mA / -48V
MSW2-001005H	SPDT	0.1-0.5	0.8	30	1.5	120	900ns	30ns	200mA / 5V	50mA / +24V

RF Switch (High Power 120W)

120W RF Switch Absorptive and Reflective

Model	Type	Freq.	Insertion	Isolator	VSWR	Average	RF switching	TTL delay	Power	Power
		Range	Loss			Power	Time	Time	Supply 1	Supply 2
		GHz	dB Max			dB Min	Max	ns Max	ns Max	Type
MSW2-002004H	SPDT	0.2-0.4	1.0	30	1.5	50	10us	30ns	200mA / 5V	10mA / -48V
MSW2-005010H	SPDT	0.5-1	0.7	30	1.3	120	900ns	30ns	200mA / 5V	10mA / -48V
MSW2-010020H	SPDT	1-2	0.7	30	1.4	120	900ns	30ns	200mA / 5V	10mA / -48V
MSW2-020040H	SPDT	2-4	0.6	30	1.4	120	900ns	30ns	200mA / 5V	10mA / -48V
MSW2-020040H	SPDT	2-4	0.6	30	1.5	120	900ns	30ns	200mA / 5V	10mA / -48V
MSW2-035040H	SPDT	3.5-4	1	26	1.5	120	900ns	30ns	200mA / 5V	10mA / -48V
MSW2-040050H	SPDT	4-5	2	30	1.7	25	10us	30ns	200mA / 5V	10mA / -48V
MSW2-040080H	SPDT	4-8	1	28	1.7	120	900ns	30ns	200mA / 5V	10mA / -48V
MSW2-060180H	SPDT	6-18	1.6	26	1.8	120	900ns	30ns	200mA / 5V	10mA / -48V
MSW2-060180H	SPDT	6-18	1.6	26	1.8	120	900ns	30ns	200mA / 5V	10mA / -48V
MSW2-160180H	SPDT	16-18	1.2	30	1.5	120	900ns	30ns	200mA / 5V	10mA / -48V
MSW5-040050H	SP5T RF	4-5	2.0	30	2.0	25	10us	30ns	+5V	-28V

The datasheet will be provide if you needed any products. Pls. Email us: info@mic-root.com

RF Switch (High Power 120W)

RF Switch (High Power)

Model: MSW1-020180R

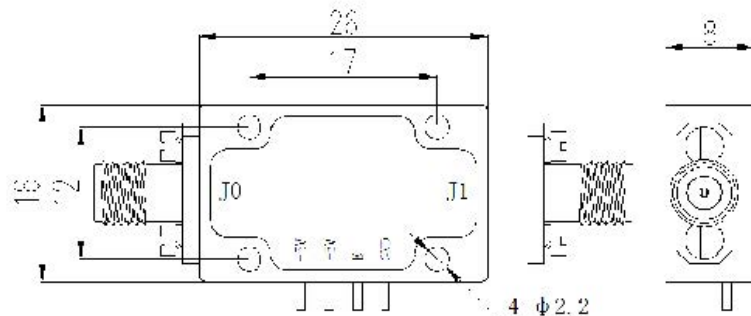
SPST RF Switch



Control Way (Spst.....SP8T)

TTL 3.3V (0: ON; 1: OFF)			
E	(0: ON; 1: OFF)	E4	J0 - J4
E1	J0 - J1	E5	J0 - J4
E2	J0 - J2	E6	J0 - J5
E3	J0 - J3	E7	J0 - J6

Outline Drawing Unit: mm



Elec. Spec. "50Ω"

Freq. Range (GHz)	2-18
IL (dB) Max	2.0
Isolator (dB) Min	55
VSWR Max	2.2
CW Power (W) Max	0.2
RF Switch Time Max	50ns
TTI delay Time Max	30ns
Power Supply (1) Typ	30mA / 5V
Power Supply (2) Typ	30mA / -5V
Operating Temp.(°C)	-30 ~ + 70
Connector	SMA-Female
Switch Type	Reflective

RF Switch (High Power)

Model: MSW8-020180R

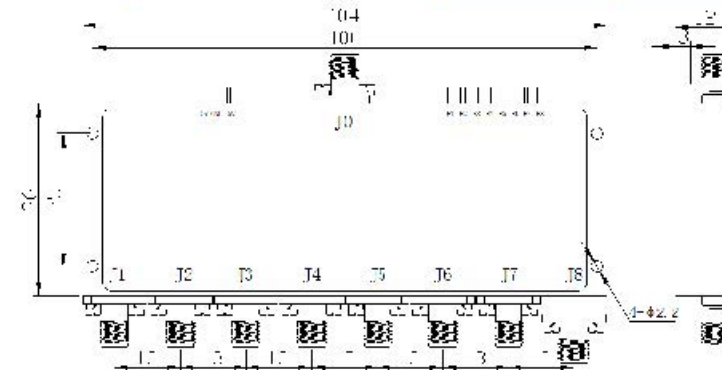
SP8T RF Switch



Control Way (Spst.....SP8T)

TTL 3.3V (0: ON; 1: OFF)			
E	(0: ON; 1: OFF)	E4	J0 - J4
E1	J0 - J1	E5	J0 - J4
E2	J0 - J2	E6	J0 - J5
E3	J0 - J3	E7	J0 - J6

Outline Drawing Unit: mm



Elec. Spec. "50Ω"

Freq. Range (GHz)	2-18
IL (dB) Max	3.5
Isolator (dB) Min	60
VSWR Max	2.2
CW Power (W) Max	0.2
RF Switch Time Max	50ns
TTI delay Time Max	30ns
Power Supply (1) Typ	30mA / 5V
Power Supply (2) Typ	30mA / -5V
Operating Temp.(°C)	-30 ~ + 70
Connector	SMA-Female
Switch Type	Reflective