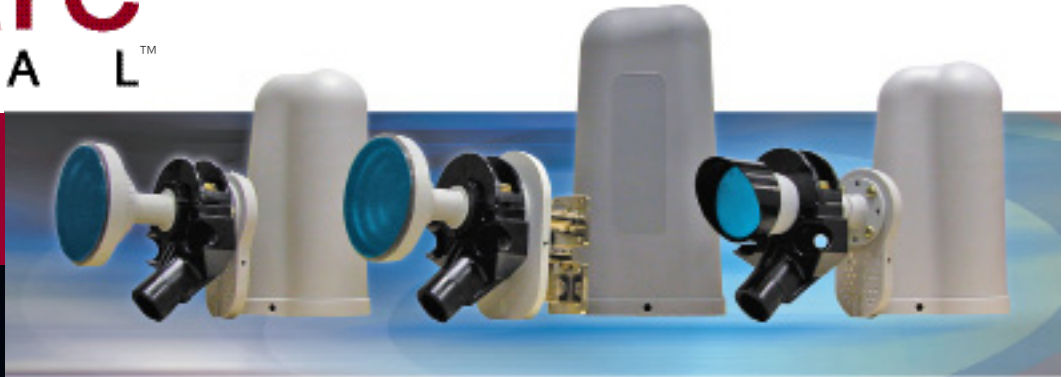


**PRODUCT  
SPECIFICATIONS**



## Ku-band Receive Only Feed Assemblies

The Skyware Global Ku-Band feeds have been specifically designed for our line of offset reflectors. Electrically tested and matched, these die-cast feed assemblies provide maximum performance for demanding commercial applications.

- The dual-mode style feed horn offers enhanced performance for linear applications from 11.7 to 12.75 GHz. The corrugated feed horn should be used for broadband applications.
- Single polarity feeds have a standard C-120 flange. An adapter to WR75 is included for use with a single LNB.



### SPECIFICATIONS

MODEL	611606007	611606207	611606010
Feed Horn Type	Corrugated	Corrugated	Dual Mode
Frequency Band	10.70 - 12.75 GHz	11.2 - 12.75 GHz	11.7 - 12.2 GHz
VSWR	1.3:1	1.4:1	1.3:1
Polarization	Single, Linear	Dual Linear, Orthogonal	Single Linear
Waveguide Flange	WR75 or C-120	(2x) WR75	WR75 or C-120

*(All Specifications Typical)*

