

Polarotor I E/A

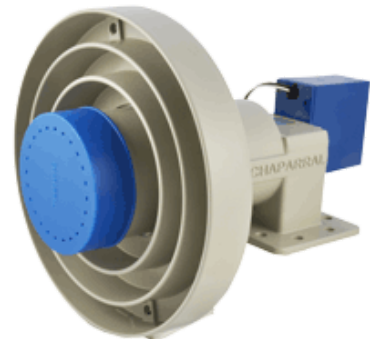


Designed for reception of C-Band frequencies (3.4 – 4.2 GHz), the Polarotor I E/A feedhorn includes Chaparral's reliable servo motor for polarity selection. In use for decades in millions of home satellite systems, the Polarotor I E/A has earned the reputation as the best-performing C-Band feedhorn in the world.

Applications

- C-Band satellite systems in:
 - North America
 - South America
 - Middle East
 - Africa
 - Asia
- Home satellite systems
- Commercial satellite systems
- Optional dielectric plate for circular polarity

Polarotor I E/A



Dielectric Plate For Circular Polarity

Features

- Designed in the United States
- Patented probe design
- Precision cast-aluminum body, scalar and waveguide
- Waveguide flange with water-resistant gaskets
- 100% tested Servo motor
- Low-loss throat cover
- Stainless steel mounting hardware
- Durable polyurethane powder coating
- Mounts to single-pole, tripod and quadpod supports

- Cast-in f/D gauge
- Adjustable scalar (economy-adjustable)
- Single set-screw scalar rig
- Through and threaded mounting holes

Specifications

Part Number	11-6870-1	View our entire line of Feedhorns
Frequency Range	C-Band: 3.4-4.2 GHz	
Polarization	Linear; horizontal and vertical, Circular; with optional dielectric plate	
f/D Range	.32 to .45	
VSWR	1.25 to 1	
Cross Pol. Isolation	35 dB	
RF Ports	WR 229 Compatible	
Power requirements	+5VDC and TTL Logic Pulse	
Temperature Range	-50° F to + 175° F	
Size	6.5" diameter x 8.13"	
Weight	2.7 lbs.	
Warranty	2 years	