

# 2.4mm

## CONNECTOR SERIES

### INTERFACE MATING DIMENSIONS SPECIFICATIONS

#### CONTENT:

- Direct Solder Plug
- Direct Solder Jack
- Panel Recept Plug-Accepts Pin
- Panel Recept Jack-Accepts Pin
- Plug To Plug Adaptor
- Plug To Jack Adaptor
- Jack To Jack Adaptor



**Bridging Gaps**

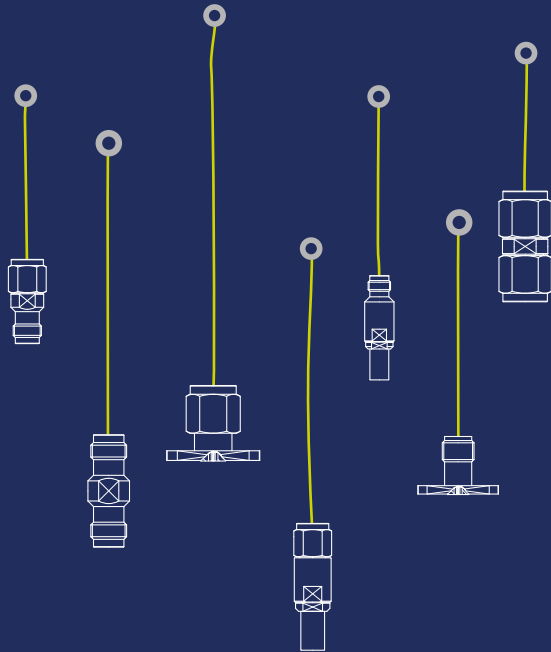


# 2.4mm series

The 2.4mm series was designed to eliminate the fragility of the SMA and 2.92mm connectors by increasing the outer wall thickness and strengthening the female fingers.

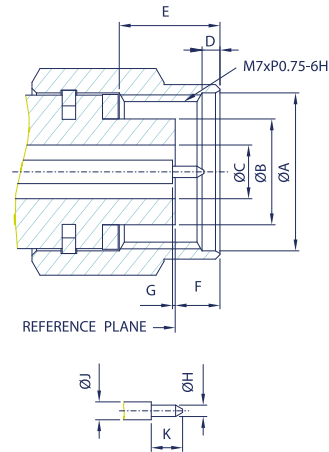
The outer contact ID is 2.4 mm, and OD is 4.7 mm.

The performance is up to 50 GHz.

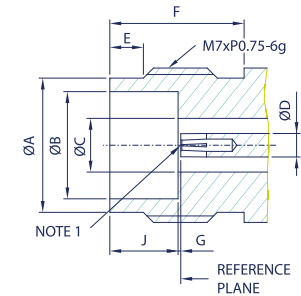


## INTERFACE MATING DIMENSIONS

### PLUG /



### JACK /



PLUG		
Letter	Millimeters	
	Minimum	Maximum
A	7.01	7.11
B	4.72	4.75
C	2.39	2.41
D	0.51	0.76
E	3.56	3.81
F	1.85	2.67
G	0	0.08
H	0.5	0.52
J	1.03	1.05
K	1.35	1.45

JACK		
Letter	Millimeters	
	Minimum	Maximum
A	5.79	5.89
B	4.77	4.79
C	2.39	2.41
D	1.03	1.05
E	1.40	1.65
F	5.99	-
G	0	0.08
H	3	3.1

NOTE 1: I.D. TO MEET VSWR AND CONTACT RESISTANCE WHEN MATED WITH 0.5 / 0.52 MM DIA. PIN.

## SPECIFICATIONS

### Electrical /

Impedance	50 Ohm	
Frequency Range	0 - 50 GHz	
Insertion Loss	0.05 x $\sqrt{F(\text{GHz})}$ dB Max.	
VSWR	1.3 Max.	
Contact Resistance	Center Contact	4 Milliohms Max.
	Outer Contact	2.5 Milliohms Max.

### Material /

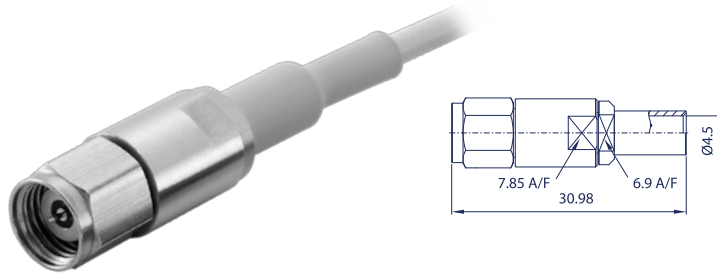
Parts Name	Material	Finish
Body, Metal Parts	Stainless Steel per QQ-S-764	Passivated
Center Contacts	Male: Beryllium copper per QQ-C-530	Gold 50 micro-inches
	Female: Beryllium copper per QQ-C-530	Gold 50 micro-inches
Insulators	Rexolite	None

**NOTE:** Other Material / Finish is Available on Request.

### Mechanical & Environmental /

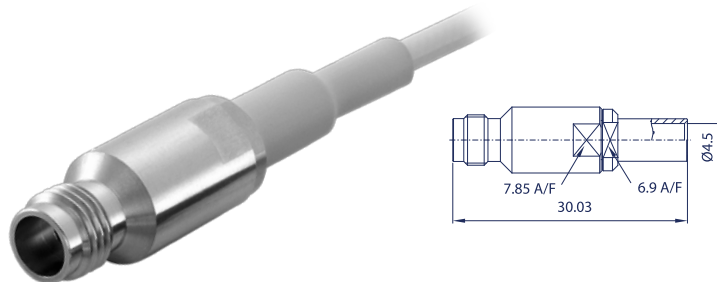
Coupling Torque Recommended	0.8 Nm...1.1 Nm
Coupling Proof Torque	1.65 Nm
Durability (Mating)	500 cycles Min.
Temperature Range	-40°C to 85°C

# 2.4mm series



DIRECT SOLDER PLUG

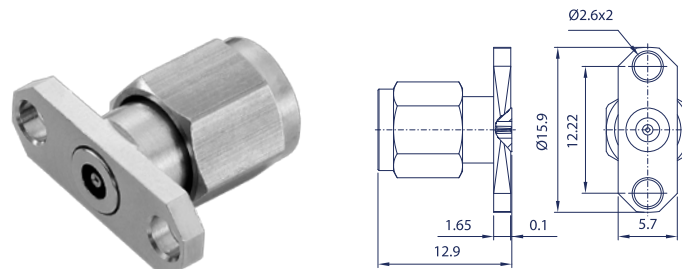
Model No.	Cable Group	Impedance
FL34P2-NS5	RG-405 (.085",.086"), SS-405 IW 1401 IW 1403	50



DIRECT SOLDER JACK

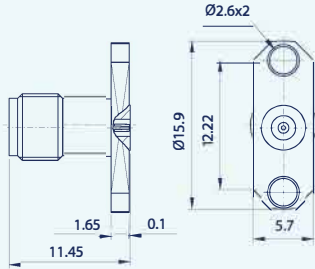
Model No.	Cable Group	Impedance
FL34J2-NS5	RG-405 (.085",.086"), SS-405 IW 1401 IW 1403	50

24



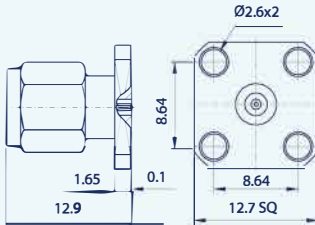
PANEL RECEIPT PLUG-ACCEPTS PIN

Model No.	Cable Group	Impedance
FL34P9-ES505	N/A	50



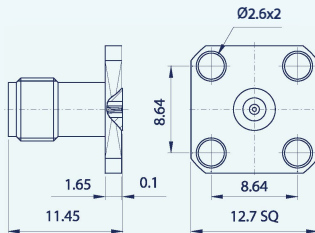
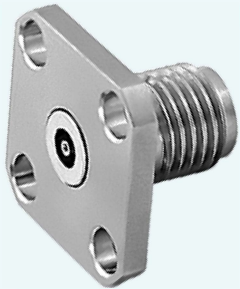
PANEL RECEIPT JACK-ACCEPTS PIN

Model No.	Cable Group	Impedance
FL34J9-ES505	N/A	50



PANEL RECEIPT PLUG-ACCEPTS PIN

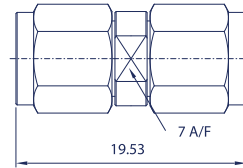
Model No.	Cable Group	Impedance
FL34P9-FS505	N/A	50



PANEL RECEIPT JACK-ACCEPTS PIN

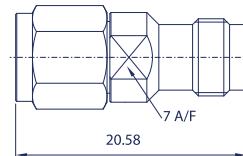
Model No.	Cable Group	Impedance
FL34J9-FS505	N/A	50

# 2.4mm series



PLUG TO PLUG ADAPTOR

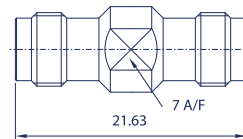
Model No.	Cable Group	Impedance
FL34B8-NS5	N/A	50



PLUG TO JACK ADAPTOR

Model No.	Cable Group	Impedance
FL34E8-NS5	N/A	50

26



JACK TO JACK ADAPTOR

Model No.	Cable Group	Impedance
FL34G8-NS5	N/A	50