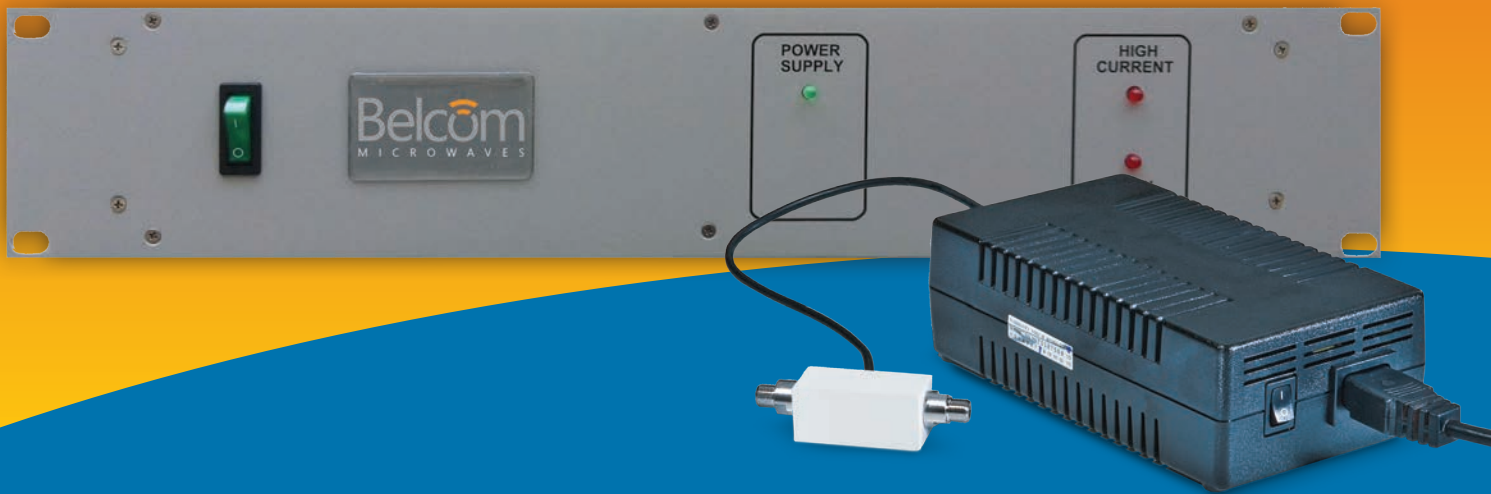


# BUC Supporting Accessories

**Play It Simple!**



## **Order your BUC and accessories from Belcom Microwaves, to ensure fair prices and compatibility.**

Belcom's accessories family, made to support its low and medium power BUCs, is designed to provide you precisely with the equipment you need for any application.

Need to power a medium power BUC through the IFL cable at the modem output? Use our A1007 - 350 Watts DC inserter, already running in the field for years!

Got to talk to your BUC? Belcom's M&C PC software for monitoring and controlling our new C-Band and Ku-Band series are available.

Want to obtain 100% serviceability? Consider installing our A1122 redundancy system with the ability to locate a failure and switch to a backup LNB or BUC, manually or automatically.

Built to be robust and reliable, Belcom Microwaves accessories are rugged enough to comply with its reputed SPARK and FLAME BUC series.

These products are covered by a full two-year warranty and are backed by our dedicated service team that ensures full repair cycle within 21 days maximum.

Several solutions to power a BUC for a few bucks are available... see overleaf.

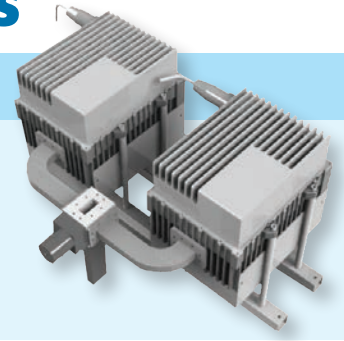
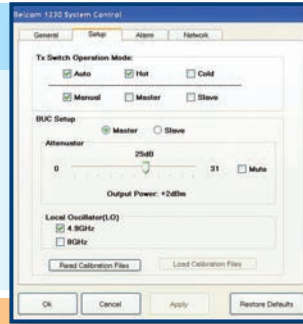
**Belcom**  
MICROWAVES  
[www.BelcomMicrowaves.com](http://www.BelcomMicrowaves.com)

Ramat Gabriel Industrial Park, P.O.B. 907, 23100 Migdal Ha'Emek, Israel  
Tel: 972-4-6417600, Fax: 972-4-6417628, [sales@BelcomMicrowaves.com](mailto:sales@BelcomMicrowaves.com)

# Belcom Microwaves BUC Accessories

## A1122 – Redundancy System

TX and RX waveguide switch control  
 Internal 10MHz reference oscillator - Optional  
 Two 250 Watt redundant DC power supplies  
 Manual and automatic operation modes  
 Simple and intuitive interface



## A1007 – DC Inserter / Power Supply

19" rack mounted (Indoor unit)  
 Internal power supply – 350 Watts  
 Internal 10MHz reference – optional  
 Low IF and reference insertion loss  
 Input and output connectors available  
 in F-type and N-type



## A1062 – Power Inserter Kit

Kit includes DC inserter, power supply,  
 AC power cord and an IFL cable.



### Available Models:

Model	Power Supply		Application
	Power (W)	V	
AN1062XX-150-24	150	24	1-8W C/Ku BUC 24V
AN1062XX-120-48	120	48	5-8W C/Ku BUC 48V
AN1062XX-220-48	220	48	10W C/Ku BUC 48V

XX=NN N Type Conn      FF F Type Conn

## A2068 – Bias T

For test and laboratory use  
 DC input – 60 Volt maximum  
 Wide range – 950 to 2100 MHz (optional)  
 SMA reference connector  
 75 Ohm F type or 50 Ohm N type  
 output connector

