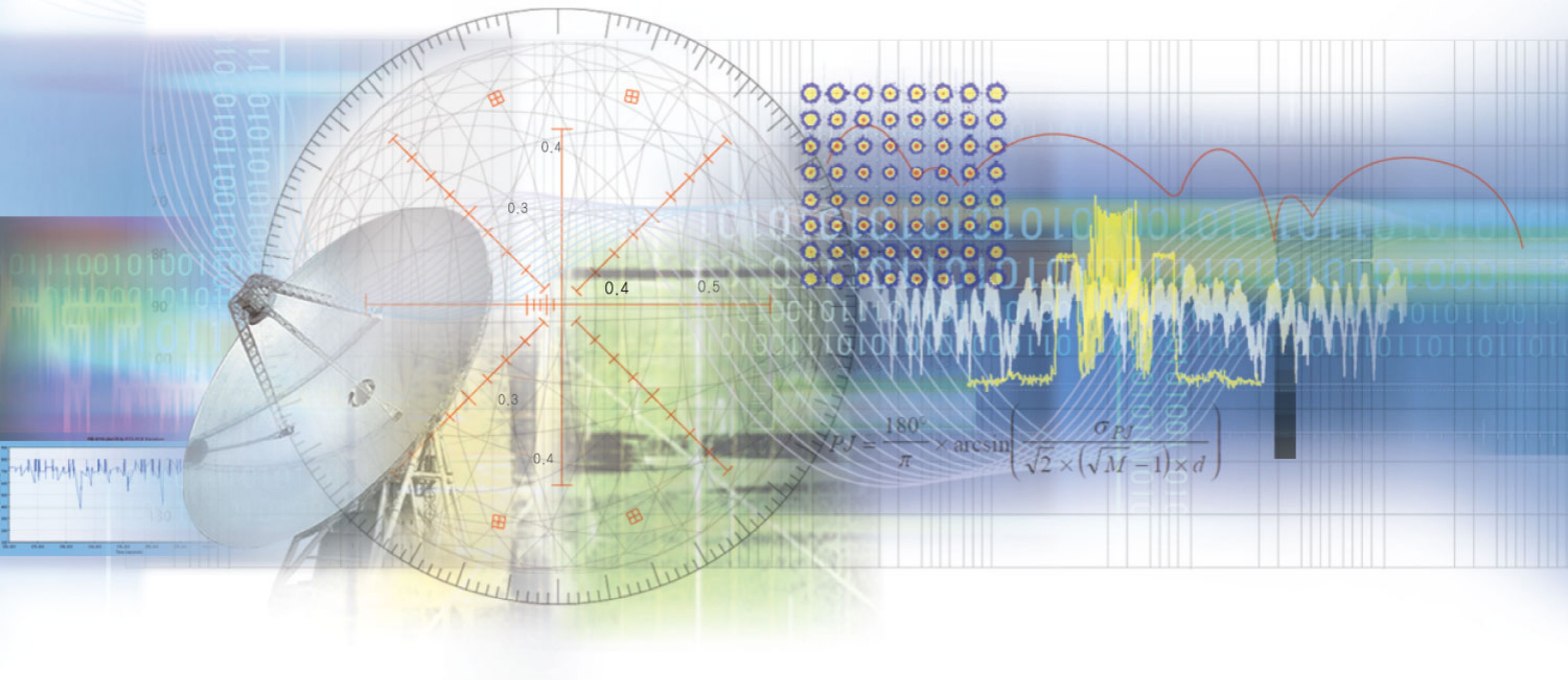


Professional VIDEO DELIVERY



CASTWIN



CASTWIN

MPEG Encoders

4K HEVC Encoder	DME-9824HEVC	6
DSNG Encoder	DMP-9724SNG	7
MPEG-2/4 AVC HD Encoder	DME-9724HM	8
MPEG-2/4 AVC HD Encoder	DME-9724H	9
MPEG-2/4 AVC HD Encoder	DME-9624H	10
MPEG-2/4 AVC SD Encoder	DME-8624S	11
Multi 8 Channel SD Encoder	DME-8624S8	12

Digital Decoders

Professional Decoder	DMD-9724D	14
Integrated Receiver / Decoder	DMD-9724IRD	15

MPEG Mediaplexes

MPEG HD Mediaplex	DMP-9724M	HD Encoder & Modulator	18
MPEG HD Mediaplex	DMP-9624M	HD Encoder & Modulator	19

NMS Management System

Management System	NMS-5000	20
--------------------------	----------	----

Professional Multiplexers

ISDB-T Multiplexer	DMX-1908ST	22
DVB-T2 Gateway	DMX-1908T2	23

Digital Modulators

DVB-S/S2 Modulator	DSM-1903ML	26
Digital Modulator	DVM-1903ML	27
Multi Format Modulator	DMFM-1903MF	28

Digital Media Converters

IP ⇄ ASI Converter	DIC-500	30	
Multi Media Scaler	DSR-1000	HDMI/SDI/Analog to HDMI/SDI	31
HDMI to SDI Scaler	DSR-500	HDMI to SDI	
Multi Media Converter	MMC-1000		32
Media Converters	ATS-500	Analog to SDI	33
	STA-500	SDI to Analog	
	STH-500	SDI to HDMI	
	HTS-500	HDMI to SDI	

“Digital Creator”

CASTWIN[®]

MPEG Encoders



4K HEVC Encoder	DME-9824HEVC
DSNG Encoder	DMP-9724SNG
MPEG-2/4 AVC HD Encoder	DME-9724HM
MPEG-2/4 AVC HD Encoder	DME-9724H
MPEG-2/4 AVC HD Encoder	DME-9624H
MPEG-2/4 AVC SD Encoder	DME-8624S
Multi 8 Channel SD Encoder	DME-8624S8

DSNG Encoder DMP-9724SNG



Introduction

DMP-9724SNG is a fully integrated MPEG-2/MPEG-4 AVC (H.264) Encoder with DVB-S/S2 Modulator in a space-efficient 1RU chassis specially designed for teleports and Digital Satellite News Gathering (DSNG) applications.

DMP-9724SNG provides the professional quality compression at ultra low latency with built-in DVB-S/S2 Modulator and IF/L-Band outputs.

Features

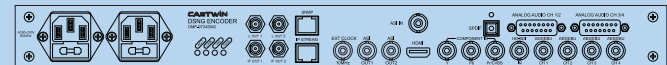
- Component, Composite, HDMI and HD/SD-SDI video inputs
- Ultra low latency as 150ms
- Up to 1080p Resolution
- 4:2:0, 4:2:2(10bit)
- Digital, Analog and SDI Embedded audio(8channel) inputs
- 5.1 channel Dolby Digital (AC-3) Encoding
- 7.1 channel SPDIF audio optical input (pass through)
- Additional 1xASI input for supporting of insertion of externally generated PSIP into the transport stream
- Selectable MPEG-2 HD or H.264 HD real-time video encoding
- Dolby Digital (AC-3), MPEG-1 Layer II, AAC-LC and HE-AAC Audio Encoding
- Control and monitoring via Web GUI and Front panel
- 4 channel AES/EBU Digital audio
- 4 stereo (8channel) Analog input with D-sub type
- Integrated advanced Scaler function
- L-Band output 950 ~2150 MHz or IF output 50 ~ 180 MHz
- DVB-S/S2 Modulation
- BISS mode 1, BISS mode 0 and BISS mode E
- Symbol Rate: 1 baud ~ 68 Mbaud

Competitiveness

- Providing your viewers with the best performance compression and flawless picture quality
- Wide use in many projects with high compatibility supporting various formats
- Best choice for broadcasting of racing, sports via real time encoding with ultra low latency at 150ms
- Reduce the cost of transmission as supporting wide range of bit-rate control and advanced video coding techniques
- Able to secure space with compact size for installing

Options

- Redundancy Dual Power
- IP Stream output
- Video Confidence Monitoring



MPEG-2/4 AVC HD Encoder DME-9724HM



Introduction

Best performing and fully programmed High-End DME-9724HM Encoder enables to transmit more video and audio channels at the available bandwidth.

Fully supporting up to 1080p, 4:2:2 and 4:2:0, MPEG-2/MPEG-4 AVC (H.264), it delivers the real-time video quality with user-friendly easy to set up front control panel.

Features

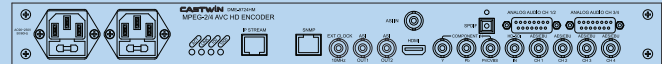
- Component, Composite, HDMI and HD/SD-SDI video inputs
- Ultra low latency as 150ms
- Up to 1080p Resolution
- 4:2:0, 4:2:2(10bit)
- Digital, Analog and SDI Embedded audio(8channel) inputs
- 5.1 channel Dolby Digital (AC-3) Encoding
- 7.1 channel SPDIF audio optical input(pass through)
- Additional 1xASI input for supporting of insertion of externally generated PSIP into the transport stream
- Selectable MPEG-2 HD or H.264 HD real-time video encoding
- Simultaneous output of 2xTransport stream (ASI) with UDP/IP or RTP/IP transport stream
- Dolby Digital (AC-3), MPEG-1 Layer II, AAC-LC and HE-AAC Audio Encoding
- Internally generated TVCT, CVCT, SDT and NIT
- Integrated excellent IP converter
- Control and monitoring via Web GUI and Front panel
- 4 channel AES/EBU Digital audio
- 4 stereo(8channels) Analog input with D-sub type
- Integrated advanced Scaler function

Competitiveness

- Providing your viewers with the best performance compression and flawless picture quality
- Wide use in many projects with high compatibility supporting various formats
- Best choice for broadcasting of racing, sports via real time encoding with ultra low latency at 150ms
- Reduce the cost of transmission as supporting wide range of bit-rate control and advanced video coding techniques
- Able to secure space with compact size for installing

Options

- Redundancy Dual Power
- Video Confidence Monitoring



MPEG-2/4 AVC HD Encoder DME-9724H



Introduction

Best performing and fully programmed High-End DME-9724H Encoder enables to transmit more video and audio channels at the available bandwidth.

Fully supporting up to 1080p, 4:2:2 and 4:2:0, MPEG-2/MPEG-4 AVC (H.264), it delivers the real-time video quality with user-friendly easy to set up front control panel.

Features

- Component, Composite, HDMI and HD/SD-SDI video inputs
- Ultra low latency as 150ms
- Up to 1080p Resolution
- 4:2:0 and 4:2:2(10bit)
- Digital, Analog and SDI embedded audio(8channel) inputs
- 5.1 channel Dolby Digital (AC-3) encoding
- 7.1 channel SPDIF audio optical input(pass through)
- Additional 1xASI input for supporting of insertion of externally generated PSIP into the transport stream
- Provides internally generated PSI and PSIP
- Control of Frame rate, Image enhance, Phase Noise, Correction of Color and Gamma
- Selectable MPEG-2 HD or H.264 HD real-time video encoding
- Simultaneous output of 2xTransport stream (ASI) with UDP/IP or RTP/IP transport stream
- Dolby Digital (AC-3), MPEG-1 Layer II, AAC-LC and HE-AAC audio encoding
- Supports EIA-708 Closed caption insertion via HD-SDI (SMPTE 334)
- Integrated excellent IP converter

Competitiveness

- Providing your viewers with the best performance compression and flawless picture quality
- Wide use in many projects with high compatibility supporting various formats
- Best choice for broadcasting of racing, sports via real time encoding with ultra low latency at 150ms
- Reduce the cost of transmission as supporting wide range of bit-rate control and advanced video coding techniques
- Able to secure space with compact size for installing

Options

- Redundancy Dual Power
- Video Confidence Monitoring



MPEG-2/4 AVC HD Encoder DME-9624H



Introduction

Compact sized 1RU chassis DME-9624H Encoder series provides excellent video quality with low latency.

Support for MPEG-2 and MPEG-4 AVC (H.264) in HD and SD allows this Encoder to be configured for a variety applications. Front control panel and Web GUI makes the configuration process easy and fast.

Features

- Component, Composite, HDMI and HD/SD-SDI video inputs
- Low latency as 800ms
- Up to 1080p Resolution
- Digital, Analog and SDI embedded audio inputs
- Additional 1xASI input for supporting of insertion of externally generated PSIP into the transport stream
- Provides internally generated PSI and PSIP
- Video input auto detection
- Various functions with integrated advanced Scaler
- Control of Frame rate, Image enhance, Phase Noise, Correction of Color and Gamma
- Selectable MPEG-2 HD or H.264 HD/SD real-time video encoding
- Simultaneous output of 2xTransport stream (ASI) with UDP/IP or RTP/IP transport stream
- Dolby Digital (AC-3), MPEG-1 Layer II, AAC-LC and HE-AAC audio encoding
- EIA-708 Closed caption insertion via HD-SDI (SMPTE 334)
- Internally generated TVCT, CVCT, SDT and NIT
- Integrated excellent IP converter
- CBR or VBR outputs

Competitiveness

- Excellent option for operators who competitively pursue the best performing encoding device with high resolution up to 1080p
- Good option for real-time encoding with low latency.
- Low cost and High performance
- Able to secure space with compact and light weight design
- Cost effective as offering quick and easy setup

Options

- Redundancy Dual Power
- Video Confidence Monitoring



MPEG-2/4 AVC SD Encoder DME-8624S



Introduction

Standard Definition DME-8624S Encoder with superb video quality and low latency is the perfect choice for customers who expect the high-class product on video/audio quality.

It shows outstanding performance with Analog (composite and component), Digital (HDMI, SDI) inputs and IP/ASI outputs with selectable MPEG-2/MPEG-4 AVC (H.264) compression options.

Features

- Component, Composite, HDMI and SD-SDI video inputs
- Low latency as 800ms
- Digital, Analog and SDI embedded audio inputs
- Additional 1xASI input for supporting of insertion of externally generated PSIP into the transport stream
- Provides internally generated PSI and PSIP
- Video input auto detection
- Control of Frame rate, Image enhance, Phase Noise, Correction of Color and Gamma
- Selectable MPEG-2 SD or H.264 SD real-time video encoding
- Simultaneous output of 2xTransport stream (ASI) with UDP/IP or RTP/IP transport stream
- Dolby Digital (AC-3), MPEG-1 Layer II, AAC-LC and HE-AAC audio encoding
- EIA-708 Closed caption insertion via SD-SDI (SMPTE 334)
- Internally generated TVCT, CVCT, SDT and NIT
- Integrated excellent IP converter
- CBR or VBR outputs

Competitiveness

- Providing your viewers with the best performance compression and flawless picture quality
- Wide use in many projects with high compatibility supporting various formats
- Able to secure space with compact size for installing

Options

- Redundancy Dual Power
- Video Confidence Monitoring



Multi 8 Channel SD Encoder DME-8624S8



Introduction

Multi 8 channel Standard Definition DME-8624S8 Encoder is a cost effective solution for variety of distribution applications such as CATV, MATV and IPTV Digital Headend. Supporting MPEG-2 and MPEG-4 AVC (H.264) encoding and multiplexing functions, 8 channel DME-8624S8 encoder allows to quickly and efficiently launch SD services with the highest video quality and low latency.

Features

- 8 Channel Encoding and Multiplexing
- Composite video input
- MPEG-2 and H.264 real time video encoding
- CBR or VBR outputs
- Dolby Digital(AC-3) and MPEG-1 Layer II audio encoding
- User selectable resolution and bit rate
- Control and monitoring via Web GUI and Front panel
- Excellent IP streaming output

Competitiveness

- Saving your budget opportunities by 8 Channel encoding
- Ensure critical content quality is preserved by using high performance compression and flawless picture quality
- Reduce the installing cost with simple set-up and compact size



Digital Decoders

Professional Decoder

DMD-9724D

Integrated Receiver / Decoder

DMD-9724IRD

Professional Decoder DMD-9724D



Introduction

High bit rate 1080p professional Decoder is designed to receive broadcast signals using MPEG-2/MPEG-4 AVC (H.264) 4:2:2 or 4:2:0 digital compression technology with low latency as 100ms.

Features

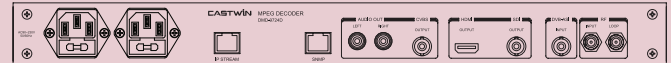
- MPEG-2/MPEG-4 AVC (H.264) Decoding
- 4:2:0 and 4:2:2(10bit) Decoding
- Ultra low latency as 100ms
- IP, ASI and RF (ATSC, QAM and DVB-T) inputs
- Composite, HDMI and HD/SD-SDI outputs
- NTSC and PAL video formats
- Control and monitoring via Web GUI and Front panel

Competitiveness

- Providing your customers with the best performance of decoding and high quality
- Able to secure space with compact and light weight design
- Easy to set-up and control

Options

- Redundancy Dual Power



Integrated Receiver / Decoder DMD-9724IRD



Introduction

Newly released professional IRD is housed in a space-efficient chassis and is able to receive various signals for decompressing. IRD is perfectly suitable for different kinds of the network and professional applications requiring 4:2:2/4:2:0 decoding solution: broadcast fiber, cable, digital terrestrial, satellite and other distribution networks.

Features

- MPEG-2/MPEG-4 AVC (H.264) Decoding
- 4:2:0 and 4:2:2(10bit) Decoding
- Ultra low latency as 100ms
- IP, ASI and RF (DVB-S/S2, ATSC, QAM and DVB-T) inputs
- Composite, Component, HDMI and HD-SDI outputs
- NTSC and PAL video formats
- Aspect ratio conversion for SD (4:3, 16:9)
- Analog 4 stereo outputs
- 8 channel AES/EBU audio input
- Video Scaling (Up/Down/Cross)
- Control and monitoring via Web GUI and Front panel
- BISS descrambling

Competitiveness

- Providing your customers with the best performance of decoding and high quality
- Save your cost with various conversion
- Able to secure space with compact and light weight design
- Easy to set-up and control

Options

- Redundancy Dual Power
- Compatible with popular conditional access systems including DVB-CI



“Digital Creator”

CASTWIN[®]

MPEG Mediaplexes

MPEG HD Mediaplex

DMP-9724M

MPEG HD Mediaplex

DMP-9624M

MPEG HD Mediaplex DMP-9724M



Introduction

Supporting selectable MPEG-2 and MPEG-4 AVC (H.264), DMP-9724M Mediaplex is the professional and high-class combination of ultra low 150 ms latency HD Encoder and Digital Modulator. This high technology product is designated to make the whole digital transmission system be compact and efficient.

Features

- Component, Composite, HDMI and HD/SD-SDI video inputs
- Ultra low latency as 150ms
- Up to 1080p Resolution
- 4:2:0 and 4:2:2(10bit)
- Digital, Analog and SDI embedded audio(8channel) inputs
- 5.1 channel Dolby Digital (AC-3) encoding
- 7.1 channel SPDIF audio optical input(pass through)
- Additional 1xASI input for supporting of insertion of externally generated PSIP into the transport stream
- Provides internally generated PSI and PSIP
- Control of Frame rate, Image enhance, Phase Noise, Correction of Color and Gamma
- Selectable MPEG-2 HD or H.264 HD real-time video encoding
- Integrated excellent IP converter
- PCR Jitter : $\leq \pm 200\text{ns}$
- Excellent RF output performance
- Scaling function with integrated advanced Scaler
- Phase Noise VHF -105 dB@20KHz, UHF -103 dB@20KHz
- Frequency: 54 ~ 1002MHz
- MER After Equalizer: 42dB

Competitiveness

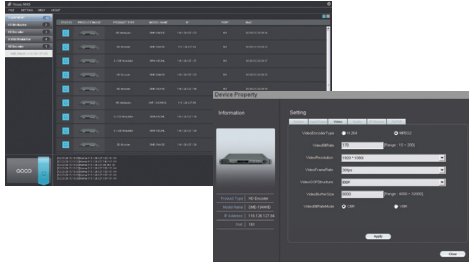
- Retain your viewers with the best performance compression and flawless picture quality
- Wide use in many projects with high compatibility supporting various formats
- Best choice for broadcasting of racing, sports via real time encoding with ultra low latency at 150ms
- Reduce the cost of transmission as supporting wide range of bit-rate control and advanced video coding techniques
- Able to secure space with compact size for installing

Options

- ATSC(8-VSB) Modulation
- QAM(Annex A, B and C) Modulation
- DVB-T/T2 Modulation
- Redundancy Dual Power
- Video Confidence Monitoring



NMS Management Systems



Introduction

Network Management System is the optimized solution for a variety of devices and applications. User-friendly interface makes it easy to manage the number of several devices at one look.

Fast-analyzing function is dedicated to respond to any occurred problem immediately, which guarantees stability and confidence in working process.

Features

- Realize High-advanced Network Monitoring
- Monitoring operation status
- Convenient Tab for searching
- Sensing for any occurred problem from devices
- Management of error, function, solution
- Management of data upon occurred error, fluctuation
- Monitoring entire network of CASTWIN
- Prompt access via Web
- Perfect and fast control
- Standard upgrade & maintenance

Competitiveness

- Optimized solution to prevent inconvenience with unnecessary function, inaccurate data, bug etc. after set-up
- Easy to use and install compared to other existing NMS
- Simple management of all CASTWIN products in one program

Professional Multiplexers

ISDB-T Multiplexer DMX-1908ST

DVB-T2 Gateway DMX-1908T2

Professional ISDB-T Multiplexer DMX-1908ST



Introduction

High performing ISDB-Tb multiplexer DMX-1908ST is a high-professional and cost-effective solution for ISDB-T/Tb transmitter manufacturers, system integrators, broadcasters and other users who need to multiplex up to 8 signals using ISDB-T or ISDB-Tb standard.

Features

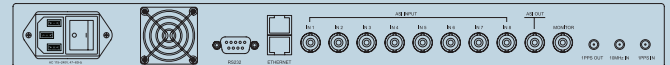
- Fully complying with ISDB-T and ISDB-Tb standards
- Compact and cost effective ISDB-T Multiplexer
- External 10MHz and 1PP input (SFN)
- PSI/SI information editing and generating
- PCR correction and PID re-mapping
- IIP Packet editing and inserting
- Interoperability proven with major ISDB-T Transmitters

Competitiveness

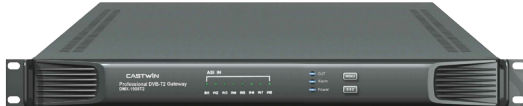
- SFN with 1PPS and 10MHz input
- Provides various re-multiplexing functions such as PCR correction, PID re-mapping, PSI/SI information editing and generating

Options

- ISDB-T & ISDB-Tb



Professional DVB/T2 Gateway DMX-1908T2



Introduction

Professional and cost-effective DMX-1908T2 Gateway is an ideal solution for users of DVB-T2 standards.

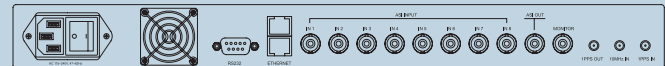
User-friendly configuration and control makes it easy to operate the device, providing stability and reliability of multiplexing process.

Features

- DVB-T2 MI interface to the DVB-T2 Modulators (Insertion of L1 Signaling & SFN Time stamp)
- Encapsulation of MPEG-2 TS into DVB-T2 Baseband Frame
- Single & Multi PLP Management
- Individual Addressing of DVB-T2 Transmitters
- User-friendly configuration and control
- Interoperability proven with major DVB-T2 Transmitters

Competitiveness

The DMX-1908T2 Gateway encapsulates one or several MPEG-2 TS from DVB-T2 multiplexers into DVB-T2 Base Band frames, and outputs the resulting DVB-T2 multiplex using the DVB-T2 MI (Modular Interface) protocol via ASI and IP. The DVB-T2 MI controls the modular parameters and provides the accurate timing and rate control required in a SFN network. It also supports MISO broadcasting to reinforce SFN performance and management of 8 PLP (Physical Layer Pipes) without any option.



“Digital Creator”

CASTWIN[®]

Digital Modulators

DVB-S/S2 Modulator	DSM-1903ML
Digital Modulator	DVM-1903ML
Multi Format Modulator	DMFM-1903MF

DVB-S/S2 Modulator DSM-1903ML



Introduction

Stand-alone high performing DSM-1903ML broadcast satellite modulation unit in a compact 1RU chassis is specially designed for satellite TV broadcasting. It provides excellent DVB-S/S2 modulation with selectable IF or L-Band outputs.

Features

- L-Band Output 950 ~2150 MHz Step 1 Hz
- IF Output 50 ~ 180 MHz
- DVB-S/S2/DSNG Modulation
- BISS mode 1 and BISS mode E support
- Symbol Rate : 1 baud ~ 50 Mbaud
- RF Power : -30 dBm to +5 dBm Step 0.1 dB
- Spurious : < -65 dB
- DVB-S/DSNG Modulation :
 - QPSK: 1/2, 2/3, 3/4, 5/6, 7/8
 - 8PSK: 2/3, 5/6, 8/9
 - 16QAM: 3/4, 7/8
- DVB-S2 Modulation :
 - QPSK: 1/4, 1/3, 2/5, 1/2, 3/5, 2/3, 3/4, 4/5, 5/6, 8/9, 9/10
 - 8PSK: 3/5, 2/3, 3/4, 5/6, 8/9, 9/10
 - 16APSK: 2/3, 3/4, 4/5, 5/6, 8/9, 9/10
 - 32APSK: 3/4, 4/5, 5/6, 8/9, 9/10
- Shoulders Rejection : < -50dB @ 0 dBm & f/fN=1.5 for roll off 20%
- External : 10 MHz input for RF synchronization

Competitiveness

- Retain your viewers with optimized modulator for DVB-S/S2/DSNG
- Cost efficiency for installing with simple set-up and operation
- Secure more space with compact and light weight design



Digital Modulator DVM-1903ML



Introduction

Professionally performing device based on selectable ATSC (8-VSB), QAM, or DVB-T standard modulation DVM-1903ML Modulator shows superior quality in modulation of MPEG transport stream DVB-ASI signal to excellent RF output with adjustable frequency and output level.

Features

- ASI input transport stream
- Excellent RF output
- User adjustable output level and frequency
- Front panel control
- PCR Jitter : $\leq \pm 200$ ns
- Group Delay as ± 20 ns
- Phase Noise VHF -105 dB@20KHz, UHF -103 dB@20KHz
- Frequency : 54 ~ 1002MHz
- Output Level : 50 \pm 5 dBmV
- Spurious : ≤ -63 dB
- MER After Equalizer : 42dB
- Highly advanced fine-tuning
- ATSC(8-VSB), QAM, DVB-T modulation

Competitiveness

- Retain your viewers with optimized modulator for ATSC(8-VSB)
- Cost reduction for installing with simple set-up and operation
- Stable output with hybrid AMP integrated
- Secure more space with compact and light weight design

Options

- DVM-1903ML ATSC(8-VSB) Modulation
- DQM-1903ML QAM (Annex A, B and C) Modulation
- DTM-1903ML DVB-T Modulation



Multi Format Modulator DMFM-1903MF



Introduction

As a multi format Modulator, it is a professional performing product which is able to modulate various standards. It shows superior quality to modulate MPEG transport stream DVB-ASI signal to ATSC(8-VSB), QAM or DVB-T and output as suitable frequency band for digital broadcasting transmission.

Features

- ASI input transport stream
- Excellent RF output
- Supports ATSC(8-VSB)/QAM/DVB-T modulation
- Supports PCR re-stamping function
- User adjustable output level and frequency
- Front panel control
- Frequency : 54 ~ 1002MHz
- PCR Jitter : $\leq \pm 200$ ns
- Group Delay as ± 20 ns
- MER After Equalizer : 42dB
- Phase Noise : VHF -105 dB@20KHz, UHF -103 dB@20KHz
- Output Level : 55 ± 5 dBmV
- Spurious : ≤ -63 dB

Competitiveness

- Wide-range used device with adapted various modulation standards
- Cost reduction for installing with simple set-up and operation
- Secure more space with compact and light weight design



Digital Media Converters

IP ⇔ ASI Converter	DIC-500
Multi Media Scaler	DSR-1000
HDMI to SDI Scaler	DSR-500
Multi Media Converter	MMC-1000
Mini Media Converters	ATS-500 STA-500 STH-500 HTS-500

IP ↔ ASI Converter

DIC-500



DIC-500

Introduction

DIC-500 is a complete cost-effective solution to transform IP to ASI and backwards ASI to IP with GigE interface just in one device. Hi-class front VFD makes it easy to set-up and operate.

Features

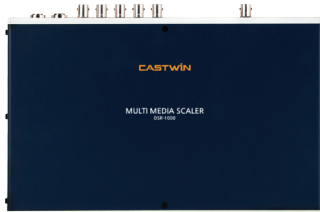
- Converts MPEG IP TS to ASI
- Converts ASI to MPEG IP TS
- Input: ASI, IP
- Output: ASI, IP
- MPTS(7TS), SPTS
- Unicast and Multicast IP Addressing

Competitiveness

- Easy way to convert a TS-over IP input or output to your TS processing device
- Excellent tunneling of ASI signals over the TCP/IP network
- User can customize all monitoring and switching rules to meet Broadcast, Cable, Satellite, and IPTV needs

Multi Media Scaler

DSR-1000



DSR-1000

HDMI to SDI Scaler

DSR-500



DSR-500

Introduction

Media Scaler series provides users with the high quality media format conversion with built-in up/down/cross resolution converter, as well as improvement of image enhancing, phase noise, color and gamma control.

Competitiveness

- Compact size and light weight
- Low cost and high performance
- Simply easy to use
- Fully compatible with all SD and HD devices

Features

DSR -1000

- Up/Down/Cross Conversion
- Selectable Output Resolution
- Input: HD/SD-SDI, HDMI, Composite, Component
- Output: HD/SD-SDI, HDMI
- Selectable Output Resolution: 480i, 576i, 720p, 1080i, 1080p

DSR -500

- Up/Down/Cross Conversion
- Selectable Output Resolution
- Input: HDMI
- Output: HD/SD-SDI
- Selectable Output Resolution: 480i, 576i, 720p, 1080i, 1080p

Multi Media Converter MMC-1000



MMC-1000

Introduction

MMC-1000 Multi Media Converter is the highly advanced media converter with SD/HD switching function. It shows the best performance while converting from HDMI, SDI, or Analog to HDMI and SDI video out simultaneously with embedded HDMI and SDI audio. Also supports redundant video input with AES/EBU and analog audio input interface.

Features

- Input : HDMI, SDI, Component and Composite
- Output : HDMI, HD/SD-SDI
- 2 Channel mini XLR audio input
- AES/EBU(BNC), Analog L/R audio input
- Firmware upgrade and configuration via USB port
- HDMI and SDI simultaneous output

Competitiveness

- Compact size and light weight
- Low cost and high performance
- Simply easy to use
- Fully compatible with all SD and HD devices

Media Converters

ATS-500 STA-500 STH-500 HTS-500

Analog to SDI



ATS-500

SDI to Analog



STA-500

SDI to HDMI



STH-500

HDMI to SDI



HTS-500

Introduction

Mini media converters from CASTWIN make it easier and more cost-effective to change the media formats according to market needs.

Analog to SDI, SDI to Analog, HDMI to SDI and SDI to HDMI converters provide a huge range of options to choose. Devices are very easy to set-up and control.

Features

ATS-500 (Analog to SDI)

- Input: Composite, Component
- Output: HD/SD-SDI
- Stereo L/R Audio Input

STA-500 (SDI to Analog)

- Input: HD/SD-SDI
- Output: Composite, Component, SDI
- SDI Loop through output

STH-500 (SDI to HDMI)

- Input: 3G/HD/SD-SDI
- Output: HDMI
- SDI Loop through output

HTS-500 (HDMI to SDI)

- Input: HDMI
- Output: 3G/HD/SD-SDI
- Embedded Audio with SDI

Business Partners

Domestic



Overseas





CASTWIN

Head Office / Laboratory / Factory

#40-12 Teheran-ro 38gil, Gangnam-gu, Seoul, Korea 06222

Phone: +82-2-6005-9118

Fax: +82 2 3453 8338

Email: castwin@castwin.com

www.castwin.com