

Broadband Power Divider

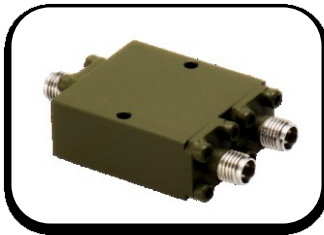
0.3-45GHz Standard Specifications

2way | 3way | 4way | 5way | 6way | 8way | 16way

ID CONNECTING



2-way



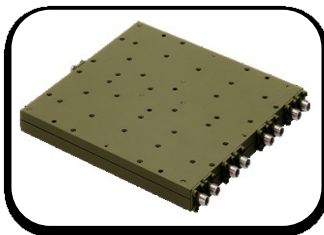
2-way



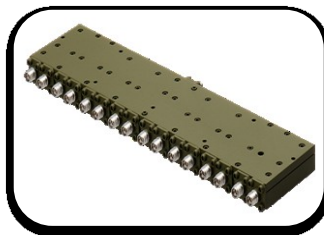
3-way



6-way



8-way



16-way

Broadband Power Divider

- Broadband 0.5-45GHz
- 2-Way | 3-Way | 4-Way | 6-Way | 8-Way | 16 Way
- Operating Temp. : -35 ~ +105 °C
- Storage Temp. -55~+125 °C
- High Isolator, Low IL.

Broadband Power Divider

The datasheet will be provide if you needed any products.

Model	Way	Freq. Rang	Input	Output	Insertion	Amplitude	Phase	Isolation	Average	Peak	Connector
			VSWR	VSWR	Loss	Balance	Balance		Power	Power	
		GHz	Max	Max	dB Max	dB Max	deg Max	dB Min	W Max	KW Max	
ID16-060180	16-Way	6-18	1.6	1.6	3.5	±0.6	±8	18	20	3	SMA-Female
ID16-060265	16-Way	6-26.5	1.7	1.7	4	±0.7	±8	16	20	3	2.92mm-F
ID16-060400	16-Way	6-40	1.8	1.8	5.1	±0.8	±9	16	20	3	2.92mm-F
ID16-100265	16-Way	10-26.5	1.7	1.7	4	±0.6	±6	17	20	3	SMA-Female
ID16-100400	16-Way	10-40	1.8	1.8	4.9	±0.6	±8	16	20	3	2.92mm-F
ID6-180265	16-Way	18-26.5	1.6	1.6	3.6	±0.5	±6	18	20	3	2.92mm-F
ID6-180400	16-Way	18-40	1.8	1.8	5	±0.6	±7	17	20	3	2.92mm-F
ID2-003180	2-Way	0.3-18	1.5	1.5	2.8	±0.4	±5	16	20	3	SMA-Female
ID2-004265	2-Way	0.4-26.5	1.5	1.5	1.9	±0.3	±4	16	20	3	SMA-Female
ID2-005080	2-Way	0.5-8	1.4	1.4	1	±0.2	±3	16	20	3	SMA-Female
ID2-005400	2-Way	0.5-40	1.6	1.6	3.5	±0.5	±6	16	20	3	2.92mm-F
ID2-010100	2-Way	1-10	1.5	1.5	1.2	±0.3	±5	20	20	3	SMA-Female
ID2-010180	2-Way	1-18	1.4	1.4	1.2	±0.3	±3	16	20	3	SMA-Female
ID2-010400	2-Way	1-40	1.6	1.6	3	±0.5	±6	16	20	3	2.92mm-F
ID2-020060A	2-Way	2~6	0.5	1.4	1.4	±0.15	±3	20	/	/	SMA-Female
ID2-020080	2-Way	2-8	1.5	1.5	0.5	±0.3	±3	18	20	3	SMA-Female
ID2-020080A	2-Way	2-8	1.35	1.5	.6	±0.4	±3	20	30	/	SMA-Female
ID2-020180	2-Way	2-18	1.5	1.5	1	±0.3	±4	18	20	3	SMA-Female
ID2-020180A	2-Way	2-18	1.5	1.5	1.2	±0.4	±5	18	10	/	SMA-Female
ID2-020265	2-Way	2-26.5	1.6	1.6	1.2	±0.3	±4	16	20	3	SMA-Female

Broadband Power Divider

The datasheet will be provide if you needed any products.

Model	Way	Freq. Rang	Input	Output	Insertion	Amplitude	Phase	Isolation	Average	Peak	Connector
			VSWR	VSWR	Loss	Balance	Balance		Power	Power	
		GHz	Max	Max	dB Max	dB Max	deg Max	dB Min	W Max	KW Max	
ID2-020400	2-Way	2-40	1.6	1.6	1.8	±0.5	±4	16	20	3	2.92mm-F
ID2-060180	2-Way	6-18	1.6	1.6	0.8	±0.4	±4	18	20	3	SMA-Female
ID2-060180A	2-Way	6-18	1.5	1.5	.8	±0.4	±5	18	10	/	SMA-Female
ID2-060265	2-Way	6-26.5	1.5	1.5	1.2	±0.3	±4	17	20	3	SMA-Female
ID2-060400	2-Way	6-40	1.6	1.6	1.5	±0.4	±5	16	20	3	2.92mm-F
ID2-080180	2-Way	8-18	1.5	1.5	1.2	±0.4	±4	16	20	3	SMA-Female
ID2-100265	2-Way	10-26.5	1.5	1.5	1.2	±0.3	±4	18	20	3	SMA-Female
ID2-100400	2-Way	10-40	1.6	1.6	1.5	±0.3	±5	17	20	3	2.92mm-F
ID2-180265	2-Way	18-26.5	1.5	1.5	1.2	±0.3	±3	18	20	3	SMA-Female
ID2-180400	2-Way	18-40	1.6	1.6	1.5	±0.3	±4	17	20	3	2.92mm-F
ID2-355360	2-Way	35.5-36	1.3	1.3	1.0	±0.2	±2	20	20	3	2.92mm-F
ID2-425446	2-Way	42.5~44.6	1.6	1.6	1.7	±0.2	±3	20	20	3	2.4mm-F
ID3-005180	3-Way	0.5-18	1.45	1.45	2.3	±0.5	±5	16	20	3	SMA-Female
ID3-020080A	3-Way	2-8	1.5	1.5	1.2	±0.7	±7	17	20	/	SMA-Female
ID3-180265	3-Way	18-26.5	1.6	1.5	1.4	±0.5	±5	18	20	3	SMA-Female
ID3-180400	3-Way	18-40	1.8	1.8	2.1	±0.7	±8	16	20	3	2.92mm-F
ID4-003180	4-Way	0.3-18	1.5	1.4	7.5	±0.4	±4	17	20	3	SMA-Female
ID4-003265	4-Way	0.3-26.5	1.5	1.5	11	±0.5	±6	16	20	3	SMA-Female
ID4-004080	4-Way	0.4-8	1.5	1.5	2	±0.4	±4	16	20	3	SMA-Female
ID4-004180	4-Way	0.4-18	1.6	1.6	4	±0.5	±6	16	20	3	SMA-Female

Broadband Power Divider

The datasheet will be provide if you needed any products. P

Model	Way	Freq. Rang	Input	Output	Insertion	Amplitude	Phase	Isolation	Average	Peak	Connector
		GHz	VSWR	VSWR	Loss	Balance	Balance		Power	Power	
			Max	Max	dB Max	dB Max	deg Max		dB Min	W Max	
ID4-004265	4-Way	0.4-26.5	1.65	1.65	5.4	±0.5	±7	16	20	3	SMA-Female
ID4-005080	4-Way	0.5-8	1.5	1.5	2	±0.4	±4	16	20	3	SMA-Female
ID4-005180	4-Way	0.5-18	1.6	1.5	3.8	±0.3	±5	16	20	3	SMA-Female
ID4-005265	4-Way	0.5-26.5	1.6	1.6	5.2	±0.4	±6	16	20	3	SMA-Female
ID4-005400	4-Way	0.5-40	1.7	1.7	7.5	±0.5	±7	16	20	3	2.92mm-F
ID4-010080	4-Way	1-8	1.5	1.5	1.2	±0.4	±4	18	20	3	SMA-Female
ID4-010100	4-Way	1-10	1.5	1.5	1.5	±0.3	±5	16	20	3	SMA-Female
ID4-010180	4-Way	1-18	1.5	1.5	2.5	±0.4	±3	17	20	3	SMA-Female
ID4-010265	4-Way	1-26.5	1.6	1.6	2.8	±0.5	±4	17	20	3	SMA-Female
ID4-010400	4-Way	1-40	1.7	1.7	5.2	±0.5	±7	15	20	3	2.92mm-F
ID4-020180	4-Way	2-18	1.8	1.8	2	±0.6	±6	15	20	3	SMA-Female
ID4-020265	4-Way	2-26.5	1.5	1.5	2.7	±0.4	±5	18	20	3	SMA-Female
ID4-020400	4-Way	2-40	1.7	1.6	4.5	±0.5	±6	16	20	3	2.92mm-F
ID4-060265	4-Way	6-26.5	1.6	1.6	1.9	±0.3	±3	16	20	3	SMA-Female
ID4-060400	4-Way	6-40	1.65	1.65	2.5	±0.6	±5	16	20	3	2.92mm-F
ID4-080180	4-Way	8-18	1.7	1.7	1.2	±0.8	±8	15	20	3	SMA-Female
ID4-100265	4-Way	10-26.5	1.6	1.6	1.9	±0.4	±3	18	20	3	SMA-Female
ID4-100400	4-Way	10-40	1.65	1.65	2.5	±0.5	±4	16	20	3	2.92mm-F
ID4-180265	4-Way	18-26.5	1.6	1.6	1.7	±0.4	±3	18	20	3	2.92mm-F
ID4-180400	4-Way	18-40	1.7	1.6	2.3	±0.5	±4	17	20	3	2.92mm-F

Broadband Power Divider

The datasheet will be provide if you needed any products.

Model	Way	Freq. Rang	Input	Output	Insertion	Amplitude	Phase	Isolation	Average	Peak	Connector
			VSWR	VSWR	Loss	Balance	Balance		Power	Power	
		GHz	Max	Max	dB Max	dB Max	deg Max	dB Min	W Max	KW Max	
ID4-233239	4-Way	23.3-23.9	1.5	1.5	2	±0.2	±3	18	20	3	SMA-Female
ID4-345355	4-Way	34.5~35.5	1.6	1.6	2.2	±0.3	±3	18	20	3	2.92mm-F
ID6-003010A	6-Way	0.35-1	1.35	/	8.8			18	100	/	N-Female
ID6-008180	6-Way	0.8-18	1.7	1.4	4	±0.8	±8	16	20	3	SMA-Female
ID6-020042	6-Way	2-4.2	1.2	1.25	.5	/	/	22	25	/	SMA-Female
ID6-020042A	6-Way	2-4.2	1.2	1.25	.5			22	25	/	SMA-Female
ID6-020080A	6-Way	2-8	1.5	1.5	1.6	±1	±9	18	10	/	SMA-Female
ID6-180265	6-Way	18-26.5	1.6	1.6	1.6	±0.4	±5	17	20	3	SMA-Female
ID6-180400	6-Way	18-40	1.7	1.7	2.1	±0.5	±6	16	20	3	2.92mm-F
ID8-005080	8-Way	0.5-8	1.5	1.5	5.8	±0.4	±4	16	20	3	SMA-Female
ID8-005180	8-Way	0.5-18	1.5	1.5	6.7	±0.4	±5	16	20	3	SMA-Female
ID8-005265	8-Way	0.5-26.5	1.6	1.6	7.7	±0.5	±5	16	20	3	SMA-Female
ID8-005400	8-Way	0.5-40	1.7	1.6	10.4	±0.6	±6	16	20	3	2.92mm-F
ID8-010180	8-Way	1-18	1.6	1.6	5.1	±0.4	±5	16	20	3	SMA-Female
ID8-010265	8-Way	1-26.5	1.75	1.75	5.8	±0.4	±5	16	20	3	SMA-Female
ID8-020080A	8-Way	2-8	1.7	1.7	2	±0.8	±7	17	20	/	SMA-Female
ID8-020180	8-Way	2-18	1.6	1.6	4	±0.5	±6	15	20	3	SMA-Female
ID8-020180A	8-Way	2-18	1.8	/	3	±0.5	±10	15	30	/	SMA-Female
ID8-020265	8-Way	2-26.5	1.7	1.7	4.1	±0.4	±5	16	20	3	SMA-Female
ID8-060180	8-Way	6-18	1.5	1.5	2.4	±0.3	±3	16	20	3	SMA-Female

Broadband Power Divider

The datasheet will be provide if you needed any products.

Model	Way	Freq. Rang	Input	Output	Insertion	Amplitude	Phase	Isolation	Average	Peak	Connector
			VSWR	VSWR	Loss	Balance	Balance		Power	Power	
		GHz	Max	Max	dB Max	dB Max	deg Max	dB Min	W Max	KW Max	
ID8-060265	8-Way	6-26.5	1.6	1.6	2.6	±0.4	±4	16	20	3	SMA-Female
ID8-060400	8-Way	6-40	1.7	1.7	3.4	±0.5	±5	16	20	3	2.92mm-F
ID8-080180	8-Way	8-18	1.7	1.3	1.3	±0.8	±8	15	20	3	SMA-Female
ID8-100265	8-Way	10-26.5	1.6	1.6	2.6	±0.4	±4	16	20	3	2.92mm-F
ID8-100400	8-Way	10-40	1.7	1.7	3.4	±0.5	±5	16	20	3	2.92mm-F
ID8-180265	8-Way	18-26.5	1.6	1.6	2.4	±0.4	±4	18	20	3	SMA-Female
ID8-180400	8-Way	18-40	1.7	1.7	3.4	±0.5	±5	16	20	3	2.92mm-F

Power Divider / Combiner

Model: 005400

8-Way Power Divider



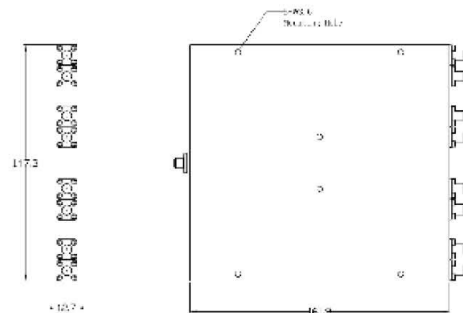
Elec. Spec. "50Ω"

Freq. Range (GHz)	0.5-40
Input VSWR Max	1.7
Output VSWR Max	1.6
Insertion Loss (dB) Max	10.4
Amp. Bal. (dB) Max	±0.6
Pha. Bal. (deg) Max	±6
Isolation (dB) Min	16
CW Power (W) Max	20
Peak Power (KW) Max	3
Connector	2.92mm-F
Operating Temp. (°C)	-35~+105
Storage Temp. (°C)	-55~+125

Features

- 1.Theoretical Insertion Loss not included in the Insertion Loss Parameter.
2. Multi-Octave bandwidth of working frequency range.
3. Superior phase balance and amplitude balance between any 2 ports.
4. Low VSWR and high Output Isolation.

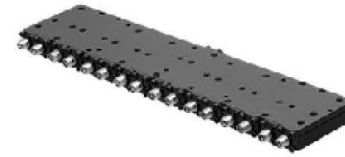
Outline Drawing Unit: mm



Power Divider / Combiner

Model: 100265

16-Way Power Divider



Elec. Spec. "50Ω"

Freq. Range (GHz)	10-26.5
Input VSWR Max	1.7
Output VSWR Max	1.7
Insertion Loss (dB) Max	4
Amp. Bal. (dB) Max	±0.6
Pha. Bal. (deg) Max	±6
Isolation (dB) Min	17
CW Power (W) Max	20
Peak Power (KW) Max	3
Connector	SMA-Female
Operating Temp. (°C)	-35~+105
Storage Temp. (°C)	-55~+125

Features

- 1.Theoretical Insertion Loss not included in the Insertion Loss Parameter.
2. Multi-Octave bandwidth of working frequency range.
3. Superior phase balance and amplitude balance between any 2 ports.
4. Low VSWR and high Output Isolation.

Outline Drawing Unit: mm

